

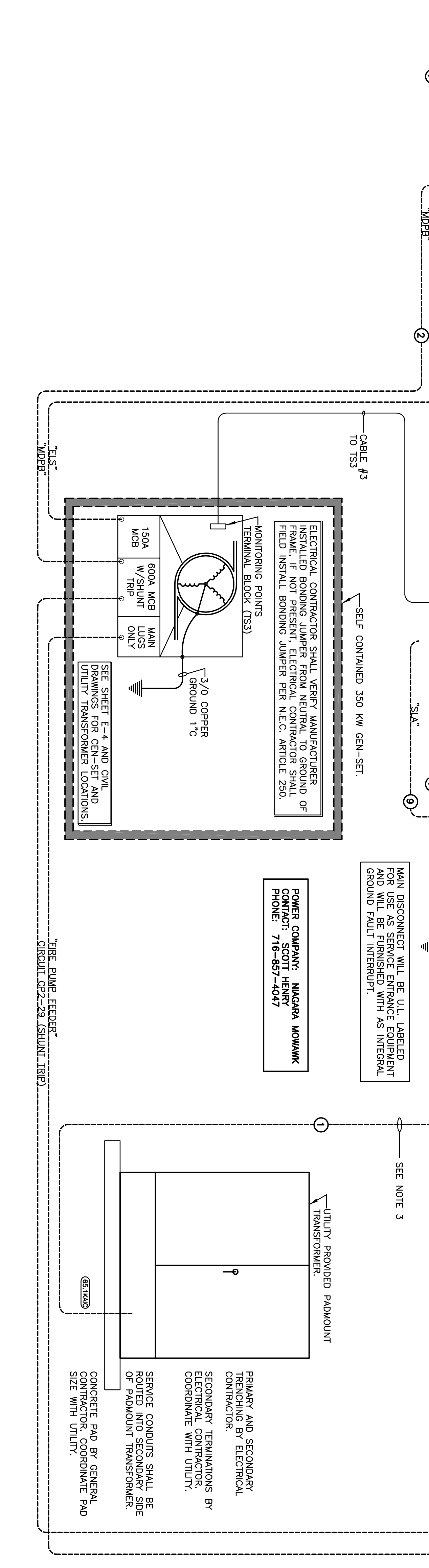
CONDUCTOR & CONDUIT SCHEDULE

- CONDUCTOR OVERSIZED TO COMPENSATE FOR VOLTAGE DROP
- 6 SETS - (4) #900 KOMIL, EACH SET IN 3-1/2" C.
- 2 SETS - (4) #350 KOMIL, (1) #1 EG, EACH SET IN 3" C.
- 2 SETS - (4) #370, (1) #1/0 EG, EACH SET IN 2" C.
- (4) #900 KOMIL, (1) #3 EG, IN 4" C.
- (4) #350 KOMIL, (1) #2 EG, IN 3" C.
- (4) #470, (1) #4 EG, IN 2-1/2" C.
- (4) #370, (1) #4 EG, IN 2-1/2" C.
- (4) #470, (1) #4 EG, IN 2" C.
- (4) #1/0, (1) #6 EG, IN 2" C.
- (3) #1, #6 EG, IN 1-1/4" C.
- (3) #2, (1) #6 EG, (1) #2 EG, IN 1-1/2" C.
- (4) #3, (1) #6 EG, IN 1-1/4" C.
- (4) #4, (1) #6 EG, IN 1-1/4" C.
- (4) #4, (1) #6 EG, IN 1-1/4" C.
- (3) #4, (1) #6 EG, IN 1-1/4" C.
- (3) #6, (1) #6 EG, IN 1" C.
- (3) #10, (1) #10 EG, IN 3/4" C.
- (4) #10, (1) #10 EG, IN 3/4" C.
- (3) #8, (1) #10 EG, IN 3/4" C.
- FACTORY WIRE CONNECTION

NOTE: ALL CONDUCTOR AND CONDUIT COMBINATIONS SHOWN MAY NOT BE USED ON THIS PROJECT.

RISER DIAGRAM NOTES

- SHORT CIRCUIT RATING - ALL 480V ELECTRICAL GEAR HAS BEEN UL TESTED AND LABELED 65,000 AC FROM THE SERVICE ENTRANCE TO THE LOAD SIDE OF THE ELECTRICAL EQUIPMENT. ALL ELECTRICAL EQUIPMENT SHALL BE LABELED WITH THIS INFORMATION WITHIN ENCLOSURES LABELED AS 65,000 AC. ALL 120/208V EQUIPMENT IS SHORT CIRCUIT RATED FOR THE MAXIMUM FAULT AVAILABLE FROM THE SUPPLYING TRANSFORMER.
- GROUNDING DETAILS ARE ILLUSTRATED ON SHEET E-4.
- PARALLEL CIRCUITS SHALL CONSIST OF ONE EACH PHASE CONDUCTOR, NEUTRAL CONDUCTOR AS REQUIRED, AND ONE EQUIPMENT GROUND IN EACH CONDUIT AS REQUIRED. SERVICE ENTRANCE DOES NOT REQUIRE AN EQUIPMENT GROUND.
- TRANSFORMERS SHALL BE MOUNTED ON THE FLOOR AS NOTED ON SHEET E-10B.
- ELECTRICAL CONTRACTOR SHALL OBTAIN AN ELECTRIC UTILITY DESIGN AND FORWARD THE TRANSFORMER SIZE AND PRIMARY FUSE SIZE TO SQUARE D/POWERBOX SOLUTIONS, SQUARE D/POWERBOX SOLUTIONS WILL THEN FORWARD THE LIST OF MAIN SETTINGS FOR UTILITY INFORMATION. THIS FORM SHALL BE PLACED IN THE FRONT POCKET OF THE MAIN BREAKER CABINET ALONG WITH THE BREAKER INSTALLATION MANUAL.
- ELECTRICAL CONTRACTOR SHALL VERIFY ALL FEEDER CIRCuits ARE PROTECTED BY THE MAIN BREAKER. ALL FEEDERS BASED ON FEEDER LENGTHS SHOWN ON THIS SHEET.
- THE CALCULATED AC VALUES SHOWN ARE BASED ON A MAXIMUM AC OF 65,000 AMPERES SUPPLIED BY THE LOCAL UTILITY.



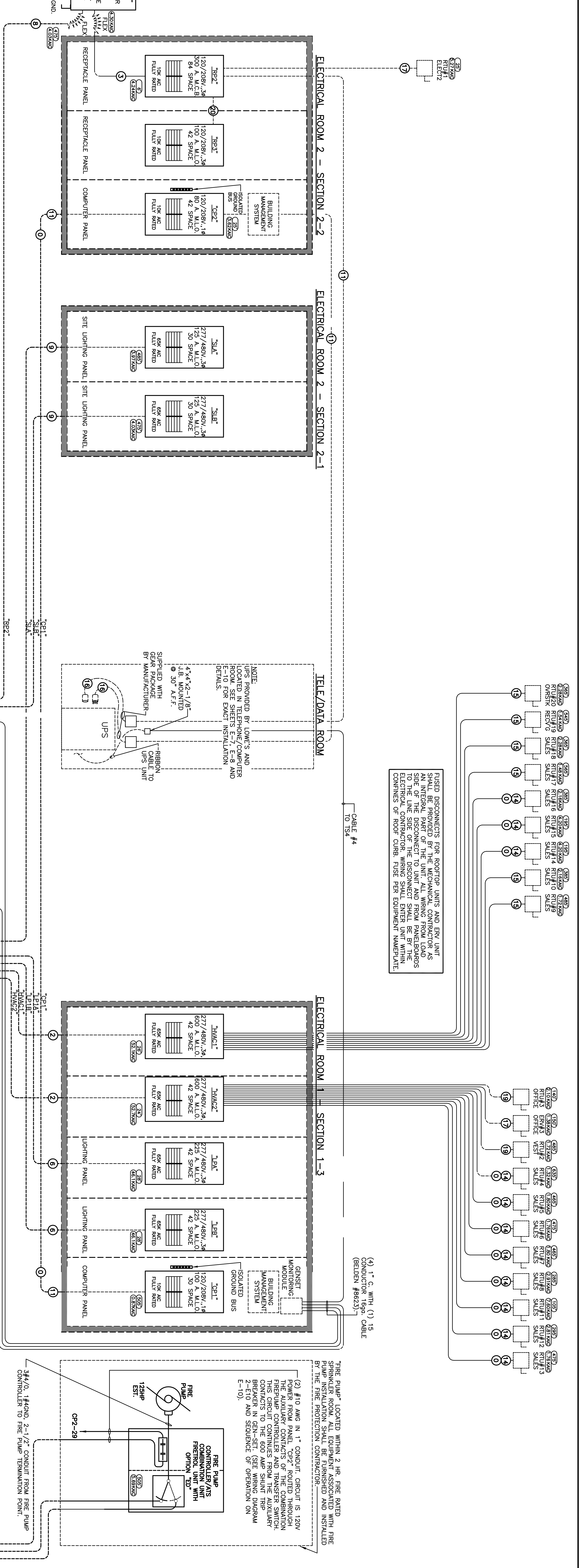
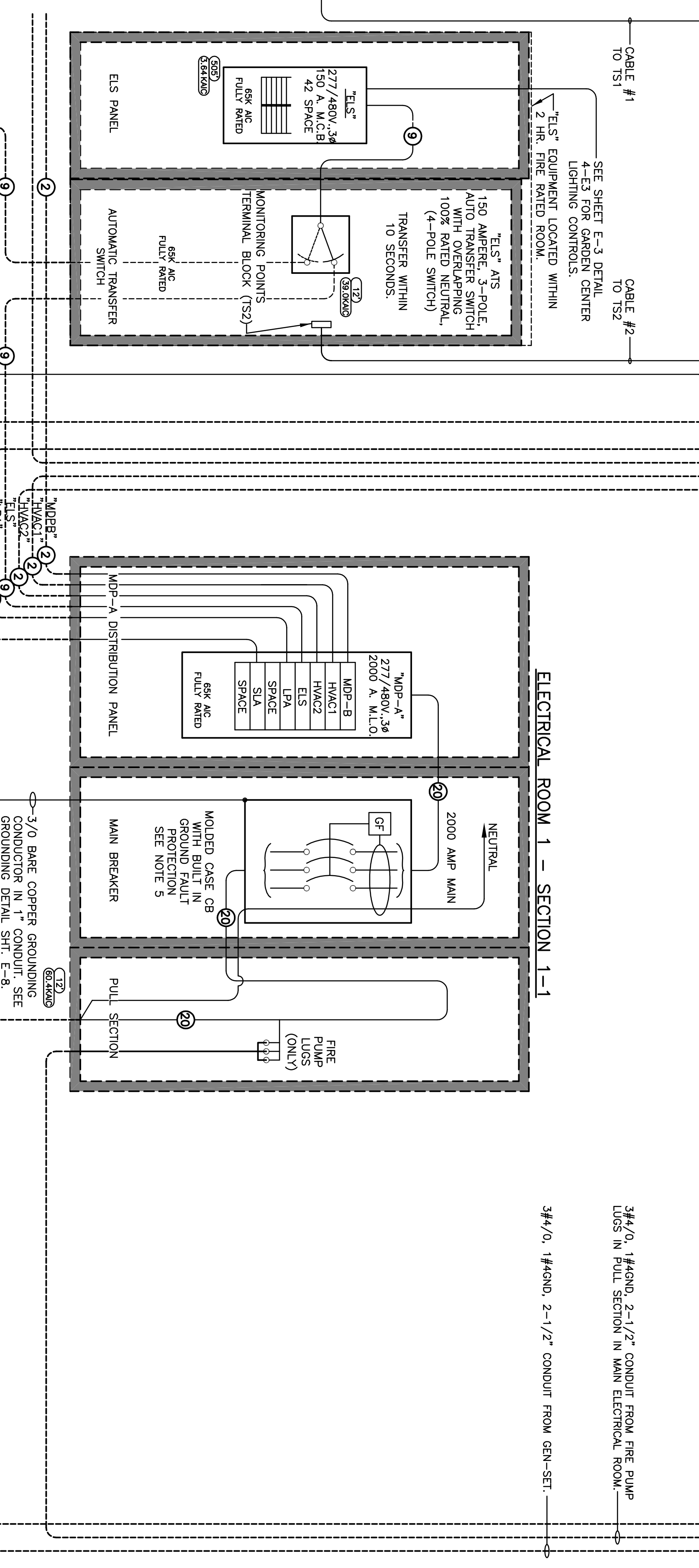
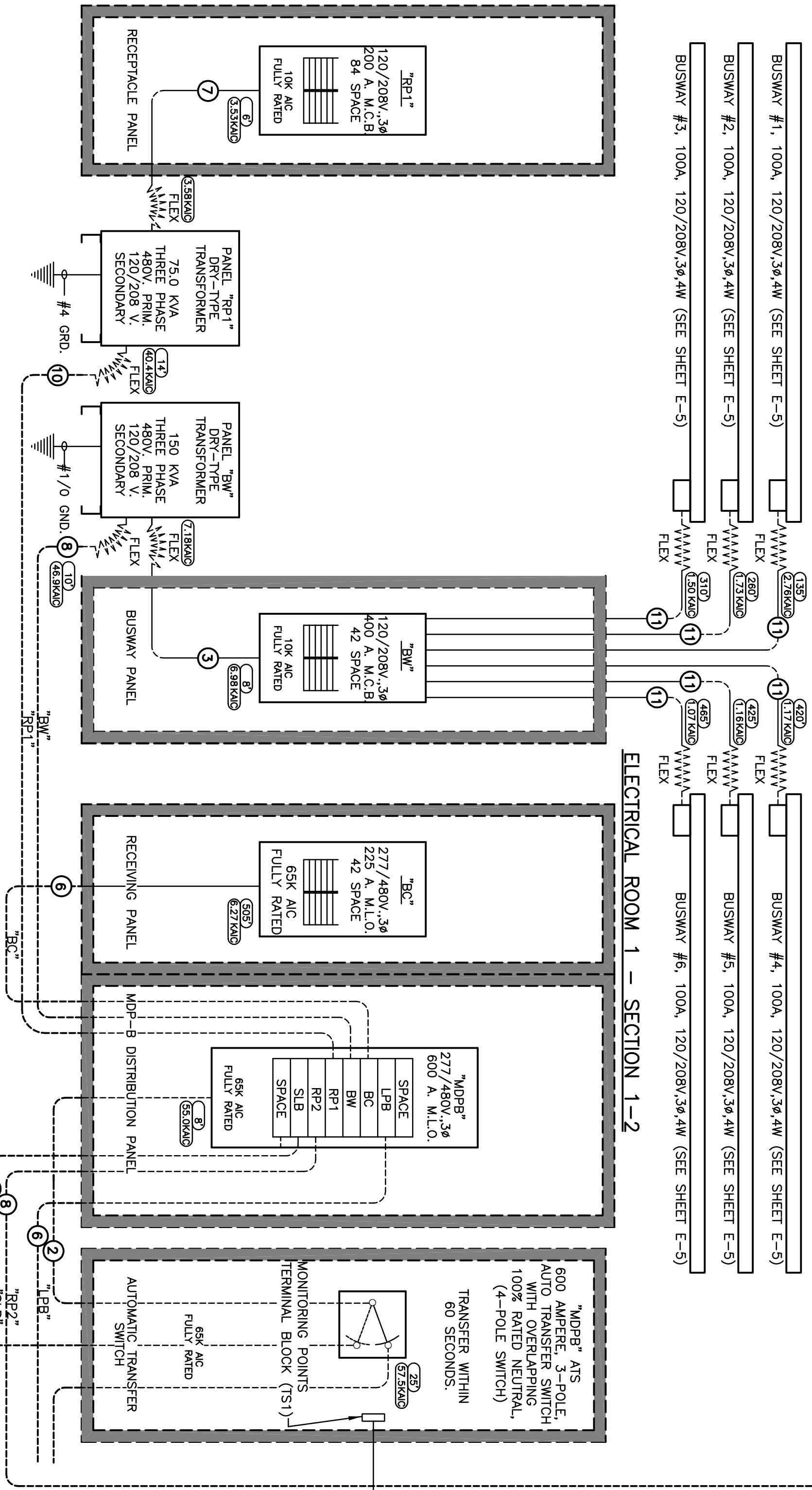
POWER RISER DIAGRAM

LOWE'S OF WEST AMHERST
WEST AMHERST, NEW YORK

PROJECT No: 03-011 DRAWN BY: CHECKED BY:

ISSUE DATE: _____
ISSUE SET: _____
ISSUE DATE: _____
CONSTRUCTION SET: _____
DRAWING NUMBER: _____

E-12



LOWE'S ENGINEERING AND CONSTRUCTION

HWY 268 EAST, EAST DOCK N. WILKESBORO, NC 28659 336.658.4000 (V)

DeWolff Partnership ARCHITECTS LLP

SAINT PAUL PLACE 151 SAINT PAUL STREET ROCHESTER, NEW YORK 14604 (585) 454-5860 FAX: (585) 454-5268

3855 CARNEGIE AVE. CLEVELAND, OHIO 44115 (216) 881-2660 FAX: (216) 881-2648

ELECTRO-MECH ENGINEERING, INC.

311 High Street NE
Canal Fulton, Ohio 44614-1158
(330) 854-0347 (voice) (330) 854-0492 (fax)
1-877-277-8649 (toll free)
design@electro-mech-engineers.com

LOWE'S HOME CENTERS, INC.

REVISIONS

DATE DESCRIPTION

STATE OF NEW YORK LICENSED PROFESSIONAL ENGINEER